

CI-huThyrEC

Human Thyrocyte Epithelial Cells

Thyroid epithelial cells (also known as follicular cells or thyrocytes) are the major cell type in the **thyroid gland** and are responsible for the production and secretion of the **thyroid hormones** triiodothyronine (T3) and thyroxine (T4).

Using our **CI-SCREEN** technology we developed a novel **immortal human thyroid epithelial cell line** displaying a **primary-like phenotype**.

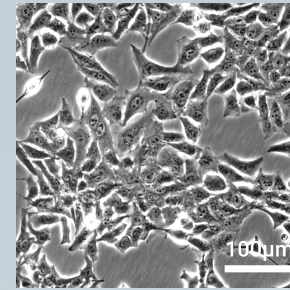


CI-huThyrECs as a model for:

- thyroid biology and disease
- endocrine disruptor screening

MORPHOLOGY

CI-huThyrECs show typical elongated epithelial-like morphology, similar to primary cells.

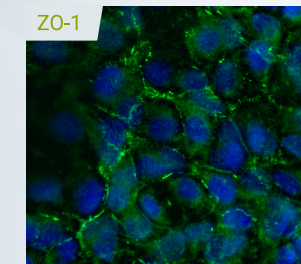
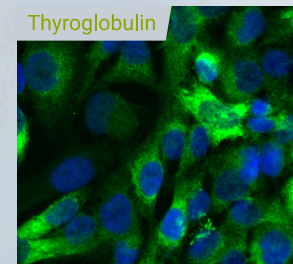


EXPANSION

CI-huThyrEC display unlimited expansion potential.

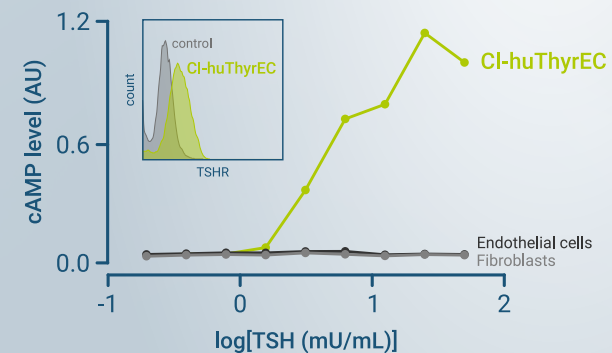


MARKER EXPRESSION



Positive signal for thyroid epithelial markers Thyroglobulin and ZO-1 in CI-huThyrECs.

TSH RESPONSE



CI-huThyrECs respond to TSH stimulation with elevated intracellular cAMP levels.